

Momentum

The Newsletter of


MemorialCareTM
Saddleback Medical Center Foundation

Sisters Dig Deep on Behalf of South OC Women



From left, Foundation President Christy Ward, Saddleback Medical Center CEO Marcia Manker, donors Taylor and Sarah Nederlander, MemorialCare Breast Center Medical Director Gary Levine, M.D., and Foundation Board Chair Cathy Han, M.D.

Like so many of us, breast cancer has hit close to home for Sarah and Taylor Nederlander.

The sisters, who grew up in Laguna Beach, supported their best friend when her mother endured difficult treatment for breast cancer and eventually passed away. They have friends and relatives who have received care for breast cancer at MemorialCare's Breast Center in Laguna Hills.

After learning about the Women's Health Pavilion and the plans to build a new Breast Center there, Sarah and Taylor were inspired to make a difference for other breast cancer patients in the community.

As part of their work with the Harry J. Nederlander Charitable Foundation, the sisters have made a \$2.5 million gift to support the new Breast Center, which will move to the first floor of the new Women's Health Pavilion.

**"With our gift, we hope to ensure
that, today especially, more
women in our local community
have access to advanced
screening, treatments and care."**

Sarah Nederlander

On Sept. 20, MemorialCare Saddleback Medical Center held a groundbreaking ceremony for the Women's Health Pavilion and announced the gift from the Nederlanders in support of the Breast Center.

See **WOMEN**, p. 5

SCAN ME
to learn how to
partner with us on
the Women's
Health Pavilion.



memorialcare.org/women

FALL 2022

2

President's Message:
Christy Ward

Your Generous Gifts
'Shed Light' on Cancer

3

Celebrating Donors' Generosity,
Boosting Health and Wellness

4

Grant Provides Focused Training
for Senior Care

5

Donor Spotlight: Frances Ann Beck

6

Golfers Tee Off for Heart Health

Meet Our Board of Directors

A New Era for Women's Healthcare

At our Women's Health Pavilion groundbreaking ceremony on September 20, we were delighted to announce that sisters Sarah and Taylor Nederlander, through their important work with the Harry J. Nederlander Charitable Foundation, have made a generous \$2.5 million commitment to support our Breast Center. In recognition of their generosity, we will name it the **Sarah & Taylor Nederlander Breast Center at MemorialCare Saddleback Medical Center**.

This gift will directly impact women in south Orange County, doubling the number of women we serve and transforming how they receive breast care throughout their lives. At the **Sarah & Taylor Nederlander Breast Center**, we will come alongside women in their wellness and preventative care, and be there for them with personal, compassionate care navigation in their time of need.

I'm in awe of the generous spirit of these two women, and of all the donors supporting our new initiative. We invite you to be part of this exciting project with your own commitment. If you are one of our loyal, sustaining donors who give consistently, or perhaps someone considering one of the additional naming opportunities ranging from \$25,000 to \$5 million, we appreciate your role in transforming women's health in our community.



**Christy Ward, President
MemorialCare Saddleback
Medical Center Foundation**

Christy Ward

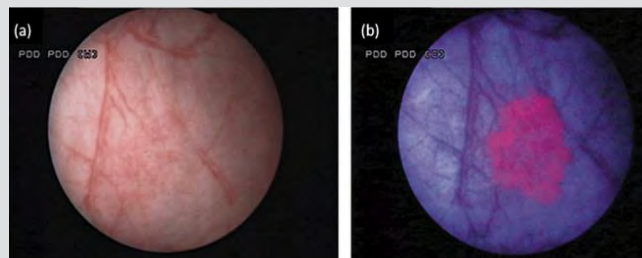
Your Generous Gifts 'Shed Light' on Cancer

Once again, your donations are making it possible for our patients to receive the most advanced treatments available.

Foundation funds have helped purchase Cysview, a special pharmaceutical product that makes invasive bladder cancer tumors glow bright pink under blue light during a cystoscopy, so doctors can treat it.

During a cystoscopy, a doctor examines the lining of the patient's bladder. Blue light cystoscopy illuminates cancer cells so they are more visible, improving early detection and removal of early-stage bladder cancer. This advanced approach to detecting non-muscle invasive bladder cancer is intended for patients suspected of having the disease.

Results show that the Cysview is clinically proven to better detect bladder cancer cells that are missed by traditional white light cystoscopies.



With Cysview, the cancer cells glow bright pink, so doctors know the exact location for treatment during a cystoscopy.

Saddleback Medical Center is the only hospital in south Orange County to offer this technology to patients.

"This is the perfect example of how charitable gifts can translate directly to better patient care. When we can help purchase cutting-edge technology, doctors have the latest tools to treat our patients. Having the Cysview at Saddleback can help save lives."

*Christy Ward, President
Saddleback Medical Center Foundation*



Top right: Heritage Society Member Claudia Smith; Far left: The celebration was held at Sherman Library & Gardens in Corona del Mar. Bottom, L-R: Gayle Luciano; and Steven, Karen, and Tiffany Silverstein



Celebrating Generosity, Health and Wellness

A floral oasis was the perfect setting for bringing back our Heritage & Friends event after three years.

The event, held on Sept. 14 at Sherman Library & Gardens in Corona del Mar, celebrated members of our **Heritage Society**, individuals who have generously supported MemorialCare Saddleback Medical Center through charitable gifts from wills, trusts, beneficiary designations (such as IRAs), and lifetime income options. Guests also included **Friends of the Foundation**, donors who give \$5,000 or more to the hospital annually.

After a reception where guests could wander and marvel at the stunning gardens, a guest panel session called **"Cultivating Your Health: Wisdom From the Garden"** discussed creating habits that can improve your health, like gardening and exercise, and making financial plans that give you a healthy mindset.

"Hobbies like gardening teach patience and flexibility when things don't always turn out how you'd

Heritage Society members have supported the hospital through charitable gifts from wills, trusts, beneficiary designations from IRAs, and lifetime income options.

expect," said Kenneth Schwarz, D.D.S., retired dentist, master gardener and docent at Sherman Library & Gardens.

Lynn Dickinson, Director of Gift Planning for Saddleback Medical Center Foundation, provided insight

on making plans through your estate to give to your loved ones and causes you care about, and how doing that creates peace of mind.

Gracia Covarrubias, M.D., of MemorialCare Medical Group discussed ways to set small, achievable goals when starting a new hobby or exercise regimen.

For more information about the Heritage Society or Friends of the Foundation, call (949) 452-3724.



A panel of special guests: Gracia Covarrubias, M.D., of MemorialCare Medical Group; Kenneth Schwarz, D.D.S., master gardener and docent of Sherman Library & Gardens; and Lynn Dickinson, Director, Gift Planning for the Foundation discuss healthy habits with Christy Ward, President of Saddleback Medical Center Foundation.

Grant Provides Special Care Focused on Senior Patients

With funds from a generous grant from the Archstone Foundation, MemorialCare Saddleback Medical Center has implemented a unique program that elevates care for our senior patients: **HELP (Hospital Elder Life Program)**.

Already an accredited Geriatric Emergency Hospital, and a recognized Age-Friendly hospital, Saddleback Medical Center staff continues its strong commitment to caring for seniors. Funds from the grant were utilized to train almost 300 volunteer nursing students in specific protocols for senior patients.

The nursing students are taught how to recognize symptoms of delirium, and how to make elderly patients feel comfortable. They set up family photos, actively listen, and hold their hands. The hospital purchased supplies for activities that help promote relaxation, manage pain, and promote sleep, like sleep masks and ear plugs, exercise bands and balls, and healing journals.

"Through these gestures, we are telling our elderly patients that we value them as a person without using words," said Mandy Salzedo, R.N., who trains the students.

The training has been expanded to four units in the hospital, including the Emergency Dept. The nursing volunteers come from schools like Concordia University,



Nursing students Lynn Phan and Lisa Warfe wear HELP t-shirts to let patients know they are volunteers for this special program.

West Coast University, and Golden West College. In the future, we hope to bring the program to our sister campus in Fountain Valley, MemorialCare Orange Coast Medical Center.

"With this program, I am able to take the time to sit with patients, attentively listen, and find out how I can help them right at that moment."

Lisa Warfe, Nursing Student, Concordia University, HELP Volunteer



From left, Mandy Salzedo, R.N.; Laura Rath, Vice President of Programs, Archstone Foundation; HELP nursing student volunteers Lisa Warfe and Lynn Phan; Jolene Fassbinder, Program Officer, Archstone Foundation; and Jessica Dela Rosa, Director, Professional Development, Saddleback Medical Center



Make a
Tree of Light
tribute gift to keep
memories of your
loved ones bright.

memorialcare.org/giveSB

Select Tree of Light
under Fund Designation
and complete tribute information.

All gifts benefit **MemorialCare
Hospice & Palliative Services at
Saddleback Medical Center,**

SAVE THE DATE

MemorialCare
Saddleback Medical
Center Foundation

SPRING GALA

April 22, 2023
WALDORF ASTORIA
MONARCH BEACH


MemorialCare
Saddleback Medical Center Foundation

Sunshine, Smiles Followed Special Donor

Laughter and a vivacious spirit were always in full force when Frances Ann Beck visited the Saddleback Medical Center Foundation office.

Usually accompanied by a tray of baked goods for our staff, Frances is remembered for her big smile and gushing about her favorite college football team, The Ohio State Buckeyes.

Frances and her late husband, Ivan, were residents of Laguna Woods for over 40 years, and during that time they generously supported Saddleback Medical Center.

In 2008, Frances was diagnosed with breast cancer and, in true Frances fashion, she quickly bonded with her treatment team, especially her surgeon, Kenneth Deck, M.D. Frances, an avid Ohio State football fan, felt an immediate connection when she learned that Dr. Deck was

from Ohio. Because of the extraordinary care she received at Saddleback and from Dr. Deck, Frances was inspired to help future patients by including the Breast

Frances Ann Beck's estate gift was designated for the Sarah & Taylor Nederlander Breast Center. The Women's Lounge in the Women's Health Pavilion will be named in Frances Ann's honor.

Center's spirit, personality and desire to speak her mind certainly made her one of our favorites.

Frances passed away last year at age 90. In her estate, she left a six-figure gift to the Sarah & Taylor Nederlander Breast Center as a tribute to Dr. Deck. In her honor, we will name the Women's Lounge in the new Women's Health Pavilion, after Frances Ann Beck.



Frances Ann Beck

Benefits of Including Saddleback Medical Center in Your Will, Trust or Beneficiary Designation

- Provide for your heirs while supporting meaningful causes
- Flexibility to change it anytime
- Leave a legacy in your community
- Tax savings, depending on your situation

For more information, call Lynn Dickinson at (949) 452-3962.

WOMEN, from p. 1

The facility will feature the first integrated breast cancer clinic, with experienced oncologists, renowned surgeons and plastic surgeons, plus expert pathologists and genetic counselors. Saddleback Medical Center expects to nearly double the number of patients served annually.

"These two young women learned at an early age the importance of giving back to their community," said Christy Ward, president of Saddleback Medical Center Foundation. "They understand how vital it is today to give women access to quality healthcare."

The 40,000-square-foot Women's Health Pavilion is expected to open in 2023, directly across the street from the main hospital. A range of services dedicated to women's health will be offered under one roof, including a Community Education Center that will expand health and wellness educational offerings.



Recognizing the naming of the Sarah & Taylor Nederlander Breast Center at MemorialCare Saddleback Medical Center

Women in Orange County lead busy lives filled with career, family, friends and community obligations, while trying to prioritize health and wellness. They are our inspiration for our new Women's Health Pavilion. Women's needs have evolved and so must our care.

Cathy Han, M.D., Foundation Board Chair

Golfers Tee Off to Support Heart Health

Golfers teed off on Aug. 8, 2022, at Aliso Viejo Country Club for MemorialCare Saddleback Medical Center Foundation's Golf Classic.

Participants were elated to be returning after a three-year break, raising \$101,000 to benefit heart health initiatives at Saddleback Medical Center.



Among the golfers were hospital supporters, physicians, and sponsors, including Presenting Sponsor Team Alvarez Insurance Services (above).



The first place foursome, and winners of the first-ever Doctors' Cup Trophy (the top all-physician group) from South Orange County Cardiology Group



Our Fund-A-Need hole encouraged golfers to give directly to MemorialCare Heart & Vascular Institute to help purchase electrophysiology equipment for diagnosis of cardiac issues, support heart attack and stroke prevention education, and benefit our patient navigators.

Leading the Way: Meet Our Board of Directors

We would like to thank our esteemed Board of Directors for serving MemorialCare Saddleback Medical Center Foundation throughout Fiscal Year 2023, and introduce our newest board members.



Our newest members, who started their term in July, are (L-R) Gretchen Conroy, M.D., Naren Goel, Patty Juarez, Rhonda Longmore-Grund, and Jesse Valencia.

Cathy Han, M.D.
Chair, Retired Physician

Gus Alvarez
Treasurer, Team Alvarez Insurance Services

Heidi Stoops
Secretary, Coast to Canyon Real Estate

Christy Ward
President, Saddleback Medical Center Foundation

Sandy Benson
Community Leader

Gretchen Conroy, M.D.
Retired Physician

Naren Goel
Ephesoft, Inc.

Candace Haynes, R.N.
Community Leader

Patty Juarez
Wells Fargo

Matthew Kimmel
Farmers and Merchants Trust Co.

Rhonda Longmore-Grund
Chapman University

Laurie Louie
Community Leader

Gayle Luciano
Community Leader

Marcia Manker
CEO, MemorialCare Saddleback Medical Center

Jim McNulty
Community Leader

Tom Rogers
Chair, MemorialCare Orange County Board of Directors

Ketan Shah, M.D.
Saddleback Medical Group

Bebe Shaddock Smith
Director Emeritus Community Leader

Wang Teng, M.D.
OC Surgeons

Jesse Valencia
NDM Communications